

Bulletin

A FAITH IN THE FUTURE

®

A BELIEF IN ACTION

November, 2022

129 YEARS OF POWERFUL JEWISH WOMEN

NCJW confronts today's most urgent social and economic challenges facing women, children and families. Powered by the Jewish imperative to ensure dignity for all, we impact policy, advocate for justice, and support the community. Your voice has never been more essential and our voices together make a meaningful difference in the world.

Become A Member

Call us at
215-302-3586

Visit us at
ncjwphiladelphia.org

Play It Forward. Help Us Help Those in Need

Tuesday, December 6, 2022

11:00 a.m. to 2:30 p.m.

Keneseth Israel Synagogue



Join us for lunch and a time to play your favorite games.
Bring your chosen game materials
Invite your group or we can match you up with other players

VOTE!

Tuesday, November 8, 2022



Getting To Know More About You

Read, how our member, Anita Shomer shows that beading can transcend language barriers.



**National Council of Jewish Women
Greater Philadelphia Section
Game Day Fundraiser**

**Our Program/Education and Sponsorship/Fundraising Committees
Invite you to
Play It Forward. Help Us Help Those in Need.**

**Tuesday, December 6, 2022
11:00 a.m. to 2:30 p.m.**

Keneseth Israel Synagogue -- 8339 Old York Rd, Elkins Park, PA 19027



Canasta, Bridge, Mahjongg, Scrabble, Trivial Pursuit

Bring your chosen game materials

Invite your group or we can match you up with other players

**BOX LUNCHEON FEE: MEMBERS \$30 GUESTS \$35
Snacks And Refreshments Provided During Play**

**REGISTER AND PAY BY NOVEMBER 28
NO WALK-INS**

**CLICK HERE TO REGISTER
AND PAY ONLINE**

OR

**CLICK HERE TO MAIL IN YOUR
PAYMENT AND REGISTRATION**

YOU WILL RECEIVE AN EMAIL RECEIPT

Questions: Call Program-Ed VPs

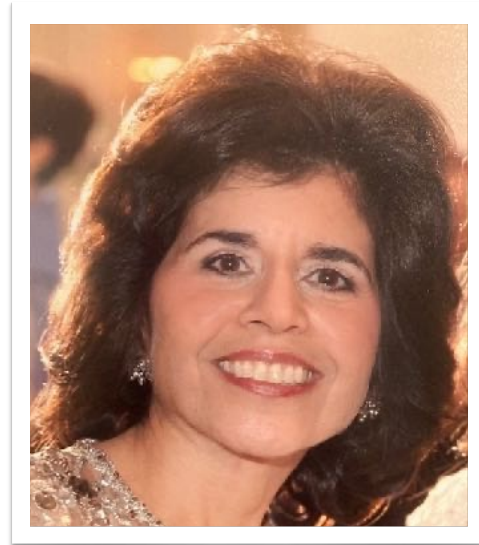
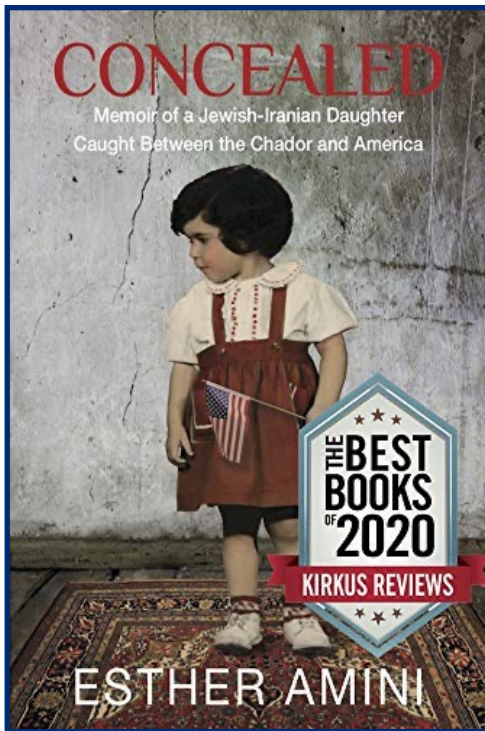
Anita Shomer 215-880-9992 or Rosalie Marcus 215-512-5110

**THERE WILL BE DONATION TABLES FOR
DAWN'S PLACE MITZVAH CIRCLE
AND BENJAMIN FRANKLIN ELEMENTARY SCHOOL**

SAVE THE DATE

Meet the Author
Tuesday, January 24, 2023
7:00 p.m.
Zoom Meeting

Our guest speaker will be Esther Amini, author of the critically acclaimed book *CONCEALED*. She'll share what it was like to grow up in a traditional Persian-Jewish household in the free-wheeling 1960's and her quest for self-determination. This is a compelling book and a great speaker.



Esther Amini grew up in Queens, New York during the freewheeling 1960s. She also grew up in a Persian-Jewish household, the American-born daughter of parents who had fled Mashhad, Iran. In *Concealed*, she tells the story of being caught between these two worlds: the dutiful daughter of tradition-bound parents who hungers for more self-determination than tradition allows.

About Esther

Esther Amini is a writer, painter, and psychoanalytic psychotherapist in private practice. Her short stories have appeared in *Elle*, *Lilith*, *Tablet*, *The Jewish Week*, *Barnard Magazine*, Washburn University's *Inscape Literary Journal*, and *Proximity*. She was named one of Aspen Words' two best emerging memoirists and awarded its Emerging Writer Fellowship in 2016 based on her memoir entitled: "Concealed" and was chosen by JWT as their Artist-in-Residence in 2019. Her pieces have been performed by Jewish Women's Theatre in Los Angeles and in Manhattan.

Esther Amini lives in New York City with her husband.

Concealed is her debut memoir.

EstherAmini.com

[Click here to purchase *CONCEALED* on Amazon](#)



Dick Polman, veteran national political columnist, addressed a very engaged audience of our NCJW Section's membership at our September Opening Luncheon. His presentation highlighting issues regarding the upcoming Mid-term elections and the peril now facing our democracy generated a large turnout. Following a question and answer period, the clearly observant reporter, remarked to one of our members, that he found our members well-informed. No surprise here!!!



If you plan to vote by mail:

- Complete your ballot
- put ballot in secrecy envelope
- place sealed envelope in OUTER envelope
- SIGN and DATE below declaration
- Check if you need postage
- Return completed ballot either by MAIL or using a DROP BOX, by 8PM November 8th, 2022

DROP BOX INFORMATION FOR BUCKS, PHILADELPHIA, AND MONTGOMERY COUNTIES

Website for location and hours drop boxes can be used:

Philadelphia County:

<https://billypenn.com/2022/10/11/philadelphia-mail-ballot-drop-box-map-2022-primary-election-2/>

Bucks County:

<https://buckscounty.gov/1417/Drop-Box-Locations>

Montgomery County:

<https://www.montcopa.org/3587/Secure-Ballot-Drop-Box-Locations>



Benjamin Franklin Elementary School

Hi all,
We dropped off 27 reams of paper plus books and school supplies to Franklin Elementary School. Lauren McKenna, one of the school's counselors, had the unenviable job of schlepping everything into the building.

Stay Well everyone!
Faye (& Eric) Benshetler

Much needed paper, 27 reams, were delivered to our adopted school, Benjamin Franklin Elementary School by our Community Service Co-Chairs, Faye Benshetler and Wendy Rader...and that was not all. Donations included more books and school supplies.

Update on our school tutoring plans. The school's counselors and I met on Zoom to discuss logistics to pursue and clarify for the upcoming program. The options being pursued include onsite tutoring between the hours of 8:30 and 10:30 a.m., online tutoring in the classroom between the hours of 8:30 and 10:30 a.m. or online tutoring in the student's home between 2:30 and 3:30 p.m., all on a weekday that would be compatible with a volunteer's schedule. It is understood that volunteers' decisions regarding onsite or online tutoring will depend on individual health concerns related to covid. For a volunteer interested in onsite tutoring, there will be a designated room for tutoring and only children who are masked will be able to participate.

NEW VOLUNTEERS WELCOME!

Call me at 215-206-1026 or email at hpgran68@gmail.com.

Harriet Gran

UPDATE FROM THE GRANTS COMMITTEE

Our Section's Grants Committee awards small grants, not to exceed \$500, to organizations that assist women, children and families through their programs and initiatives.

Please take a moment and think of a worthy nonprofit organization – 501(c)(3) – that our section might support... and where a small grant would make a difference. Ask them to submit a grant request.

A link to a copy of our Grant Application can be found on our NCJW website. Feel free to

contact Lynne Jacobs, Grants Committee Chairperson, at ljacobs816@gmail.com or 215-248-3333 with any questions.



Here's a bit of NCJW History

The National Council of Jewish Women, a women's voluntary organization, was founded in 1893. In its early years, NCJW concentrated on combating assimilation by educating Jewish women about Judaism, hoping in the process to strengthen Jewish homes by making Council members into better Jewish mothers. Their efforts expanded to include political action including immigrant aid, combatting antisemitism, and many other issues. The Council's political approach is most easily labeled as liberal, yet its politics have led others to label the organization as threatening. NCJW continues to play an important role as a bridge between traditional motherhood and political activity, between the Jewish community and other women's organizations, between Judaism and politics, and between diverse segments of the Jewish community itself.

Jewish Women's Archive jwa.org



Click to see our updated
website calendar

Community Service Update

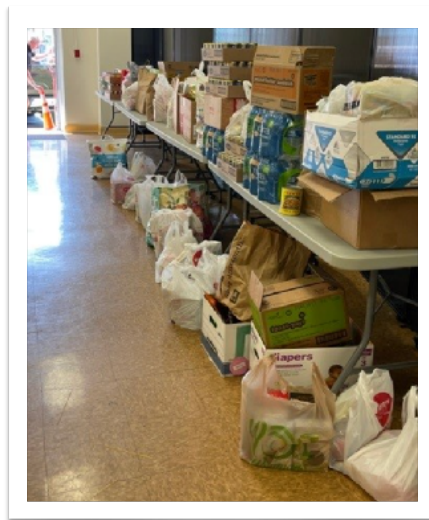
Food Insecurity is Happening Right Here and Right Now!

This article appeared in a member's association newsletter. It shows how one person's actions can motivate a community.

Wendy Rader

An Appeal

The holidays will soon be here and I trust that all in our community will be able to celebrate with loved ones and a bountiful table. Unfortunately, that is not the case for many beyond our complex. In May of 2020 I began volunteering at The Warminster Food Bank and continue to do so with others from our community having joined me. The need has grown exponentially with the increase in prices for food and housing. Those prices carry over to what the food bank has to purchase. As we all are experiencing our money not going as far, that is the case for the purchases that the food bank has to make. We are taking advantage of opportunities where items can be obtained for no cost. An example of this is an organization called the Mitzvah Circle which provides diapers for adults and children. Once a month I drive to W. Norriton to pick up a supply. Although this is not a food item it significantly helps our families freeing up funds. We also have an affiliation with Philabundance and receive items from them once a week. The Warminster Food Bank in turn, shares some of our resources with organizations in the lower part of Bucks County saving those residents from having to drive to Warminster to be assisted. One of these organizations is Salute 2 Service which provides food to veterans in need. Should you wish more information about the Warminster Food Bank please go to the website which includes the annual report. We are blessed to receive donations from individuals, churches and synagogues. Many from the Villas at Five Ponds have been very generous. But the need on a monthly basis is significant as we serve over 200 families providing them each with a cart full of food. I am grateful that I have been allowed to place a donation box in the vestibule of the Clubhouse and I will check it on a regular basis. Should you be inclined to make a donation please feel free to place it there. I am also happy to come to your home to pick up a donation of any kind of non-perishable food if that is easier for you. Monetary donations are also welcome and would be made out to The Warminster Food Bank. Please include your email address for a proper thank you. I can be reached at 914-393-8076. Thank you for taking the time to read this appeal.



Getting To Know More About You

Our member, Anita Shomer shows how beading can transcend language barriers.

My beading hobby began during a trip to Israel in 2012. I was traveling with my cousin who was enjoying beading and wanted to teach me. We spent our hotel time exploring various stitches, learning to read graphs and word charts, as well as using a variety of bead shapes and sizes. On our return to the states, our plane had an eight-hour delay. We found a table and spread our materials out. We had plenty of time to finish the projects we had started. My cousin and I noticed two women watching us and we smiled at them. They finally approached and sat down to join us with their beading. They were from Turkey and delightful. While we didn't speak each other's language, we spent the next 8 hours together conversing in beads. From then on, I was hooked. I have made some pieces with stringing and used knotting techniques to knot pearls but I enjoy various forms of peyote stitch the most. The most challenging part for me is choosing colors. Sometime I use a color wheel but more often I look to nature or color schemes that I notice in fashion. My daughters and granddaughter all have pieces from Nana that I hope they treasure.



BOOK CLUBS

Center City Book Group

Wednesday, November 9: *My Broken Language*
by Quiara Alegria Hudes
Moderator: Judy Podwil

Wednesday, December 14 *Klara and the Sun*
by Kazuo Ishiguro
Moderator: Joanne Stoloff

Wednesday, January 11 *The Dictionary of Lost Words*
by Pip Williams
Moderator: Eleanor Levie

Center City residents interested in a book group
contact Audrey Block. ablock1919@comcast.net or
215-688-0094



Afternoon Book Club

Thank you to Stephanie Fenlon who was our moderator for September for *The Personal Librarian* and thank you to Madelyn Greenberg for leading the discussion of *People Love Dead Jews* in October.

Thursday, November 17: *The Plot*
by Jean Kanff Korelitz
Moderator: Eileen Davis

Thursday, December 22: *Fresh Water for Flowers*
by Valerie Perrin
Moderator: Maria Rosen

Tuesday, January 24:
***Concealed* by Esther Amini**
Section meeting with author on Zoom

For more information, contact Susan Brooks
at 215-542-0712 or seamcrazy@outlook.com.

Evening Book Club

Thank you to Harriet Gran for leading an interesting and informative discussion of *Lincoln Highway*.

Tuesday, November 15: 1 p.m. *Black Cake*
by Charmaine Wilkerson
Facilitator: Nancy Fagan
Hostess: Evelyn Goldhammer

Tuesday, December 13 1:00 p.m. *Writers and Lovers* by Lily King
Facilitator... Faith Edelman
Hostess..... Charlotte Schwartz

Tuesday, February 21 *How to Find Your Way in the Dark*
by Derek Miller
Facilitator...Rebeca Landau
Zoom Meeting 7:30 PM

Tuesday, March 14 *The Nature of Fragile Things* by Susan Meissner



Thank you to Nancy Fagan for hosting a lovely evening in her beautiful Sukkah.

For more information about the Evening Book Club contact Joan Sax at 215-740-7349 or joansax@comcast.net.

With a couple of clicks, you can have books delivered from Amazon to your Kindle.
Join Amazon Smile and Amazon will donate 0.5% of book purchases to our Greater Philadelphia NCJW Section.

[CLICK HERE TO GO TO OUR WEBSITE BOOK PAGE](#)

WE WELCOME NEW MEMBERS

Joy Dubin Rise L. Harris

As Membership co-Vice-Presidents, we welcome all to call with any questions.

Please contact Patti First (patal16@verizon.net) or Linda Abrams (lr.abrams@gmail.com). We are delighted to send out membership packets to those wishing to become members or dues envelopes for current members.

Dues envelopes should be returned to Harriet Winokur, 732 Johns Lane, Ambler, PA 19002

Membership Dues: Annual \$45 (Be an Angel \$55 🙇)*

Please LIKE us on our Facebook page.

Search our full name "National Council of Jewish Women Greater Philadelphia Section."

*For an additional \$10, you can achieve "angel" 🙇 status which increases the number of people we can assist.

A Spotlight On Our NCJW Section

While the pandemic has limited our face-to-face events, we are still continuing our commitment to our membership by:

- Zoom programs for entire membership
- Ongoing Advocacy
- Board Meetings
- Book Club discussions by Zoom
- Monthly Bulletins to keep everyone informed
- Grants to organizations which help those suffering financial insecurity and the lack of other basic needs
- Donations to Dawn's Place helping sex trafficked survivors and abused women
- Donations to Mitzvah Circle to help needy families fill the gaps not covered by government assistance
- Donations of warm winter clothing to our adopted Ben Franklin Elementary School
- Donations to help the Ronald McDonald House
- Goodies for the Good Guys delivered to frontline workers

Please check out our website ncjwphiladelphia.org for our Bulletins, past and present, for program information and registration.

[CLICK HERE TO JOIN OR RENEW ONLINE](#)

DO YOU WANT TO BE IN PICTURES?

When you are at an event, send a picture to Harriet (harrietandmal@gmail.com), who will publish it in the Bulletin.



REMEMBER.... THERE ARE MANY WAYS TO CONTRIBUTE.

INCLUDE NCJW Greater Philadelphia Section in your estate planning.

You can help its important work continue for years to come.

Celebrating a *simcha* or have one you would like NCJW to recognize?

We will make a note of it. An acknowledgement to you and the recipient is our pleasure.

What a great way to share by making a donation to our Greater Philadelphia Section.

For information, call 215-302-3586 and leave a message for Pearl Tragash, Treasurer.



Sponsoring an event for a minimum of \$100.00 in honor of a special event or person in your life, or in memory of an important person is a great way to do a double mitzvah! You are honoring the person or event and helping NCJW. You can share this sponsorship between friends. Your name (or names) will be on the invitation flyer. This is a lovely and meaningful way to support our NCJW section! Please consider sponsoring an upcoming event. Click on the link below or call Aileen Salus 215-441-9339 or Linda Brosgol 215-672-2404 and tell us what event you'd like to sponsor.

[CLICK THIS LINK TO SPONSOR AN EVENT](#)



ELEMENTARY SCHOOL VOLUNTEER OPPORTUNITY

Join our wonderful NCJW group of volunteer tutors at our adopted Benjamin Franklin Elementary School, now in our sixth year. Until safety issues relevant to the pandemic are resolved we will pursue online tutoring and donation of warm jackets, school uniforms, and school supplies.

Please call Harriet Gran at 215-206-1026 or email hgranncjw@gmail.com.

We look forward to the time when we resume all of our volunteer activities.

Hello HAMEC Volunteers!

The Holocaust Awareness Museum and Educational Center is looking for volunteers to help in the office and as docents.

Contact Cindi Pasceri

vpasce@gmail.com or (215) 205-0133



This beautiful Tribute card is available in packages of 6 cards for \$25. Use for many occasions such as graduation, Get Well, In Memory, Bar or Bat Mitzvah, or Just Thinking of You. Your donation will help support NCJW in many ways. I would be happy to meet you and deliver your cards. You can also call me to send a card for you at a cost of \$5.00.

Ann Pollock
215-806-4068



If you have changed your address, phone number and/or email, or if you hear of a member's passing, please contact Harriet Winokur.
harrietwinokur@gmail.com

NCJW Greater Philadelphia Section 2022-2023

Presidium :

Linda Brosgol, Aileen Salus & Margie Zukerman

Vice Presidents:

Advocacy:	Elizabeth Downing
Membership:	Patti First & Linda Abrams
Programs & Education:	Rosalie Marcus & Anita Shomer
Community Services:	Faye Benshetler & Wendy Rader
Fund Raising:	Linda Brosgol & Aileen Salus

Officers:

Treasurer:	Pearl Tragash
Assistant Treasurer:	Margie Zukerman
Financial Secretary:	Harriet Winokur
Recording Secretary:	Susan Chace
Corresponding Secretary:	Bobbie Berman

Board Directors at Large:

Sherry Kohn Eisman
Nancy Cox
Diane Plotnick
Kay Skloff
Jackee Swartz

Immediate Past Presidium Officers:

Charlene Kurland
Ellen Mirbach
Elizabeth Downing

Honorary Founding Director:

Diane Steinbrink

Harriet Gran, Bulletin Editor.
Mal Gran, Website Manager
harrietandmal@gmail.com
Ellen Toplin, Technical Advisor

Thank you to those members whose help with the publication of the Bulletin is so appreciated:
Harriet and Mal Gran, Carol Stein, Judy Fried, Char Kurland, Ellen Toplin and Liz Downing.

National Council of Jewish Women is a grassroots organization of volunteers and advocates who turn progressive ideals into action. Inspired by Jewish values, NCJW strives for social justice by improving the quality of life for women, children and families and by safeguarding individual rights. We are a 501 (c)3 nonprofit organization. Our National web site is www.NCJW.org

Paul Kaplan
Steve Rosen



Casino
Classic
Catering

Catering for all your needs.

54A East Bridge Street • Morrisville, PA 19067 • 267.334.4155
P: 215.702.9120 • F: 215.702.1004 • ClassicCateringByPaul@gmail.com



custom shirts, decals and unique gifts

technicolormoments@gmail.com facebook.com/groups/
@technicolor_moments technicolormoments



Hebrew Helpers

Bar/Bat Mitzvah Preparation ■ Jewish Education
In-home Lessons ■ Specialized Learning
Private Bar/Bat Mitzvah Services ■ Destination Services

Now in Philadelphia & New Jersey!

Debbie Jaffe

www.hebrewhelpers.com 917-541-6363

Shiva

Made Easy, LLC

Deborah Cohen 215-783-6154 www.shivamadeeasy.com
Debra Miller 215-205-1405 perkiedmc@verizon.net



Patricia Tagliolini
Real Estate Salesperson

o 215.348.4848 m 215.882.1202
pat.tagliolini@compass.com

ROSENBLUTH
Vacations

SUSAN K. SNELLENBURG
VACATION SALES ASSOCIATE

610 GERMANTOWN PIKE, SUITE 180, PLYMOUTH MEETING, PA 19462
610-825-9010 • Fax 610-825-4588 • 1-800-438-7802
Email: ssnellenburg@rvacations.com

Elite's Family of Shops...
Serving all your Floral needs.

Elite Florals 215.886.6760
Abington www.eliteflorals.net

Foxes Elite Flowers 215.884.1106
Jenkintown www.foxflowerselite.com

Elite Treehouse Flowers 215.672.3050
Warminster www.elitetreehouseflowers.com



VOLUNTEERS FOR ISRAEL
Philadelphia Region
(DE, NJ, PA, WVA)

www.vfi-usa.org
philadelphia@vfi-usa.org

BEVERLY COHEN
Regional Director
610.584.0468

CAROL STEIN
Regional Director
215.646.6381

SUSAN CHACE, MSW, LCSW
Geriatric Care Manager

8005 Rodgers Road Elkins Park, PA 19027-1325
Phone: 215-782-8088
Email: slchace@comcast.net
Website: susanlchace.com



S.G.S. PAPER CO.
540 W. Mt. Carmel Avenue, Glenside, PA 19038

(215) 884-5791
Fax: 215-884-6435
sgspaperco@yahoo.com
Barry S. Schwartz

- Paper Products
- Party Goods
- Janitorial Supplies
- Personalized Printing
- Balloons & Helium



Jane Barr Horstman
& ASSOCIATES, INC.

Jane Barr Horstman & Associates offers
High-Level Personal Assistance
(In-Person and Virtual)

- **Home Management** – multi-premises maintenance, house sitting, cleaning, décor, landscaping, pool, scheduling of staff and vehicle maintenance
- **Errands** – personal shopping, wardrobe, deliveries, scheduling vendors, dry-cleaning, repairs, etc.
- **Help for the holidays and party planning** (all sizes)
- Scheduling **appointments** and accompanying you to the appointments
- **Bill payment**



Jane Barr Horstman
215-399-9436
jane@barrhorstman.com
www.janebarrhorstman.com

NOVEMBER

Sunday

Monday

Tuesday

Wednesday

Thursday

Friday

Saturday

		1	2	3	4	5
6	7	8	9 CENTER CITY BOOK CLUB	10	11	12
13	14 ADVOCACY PROGRAM	15 BOARD MEETING 1:00 EVENING BOOK CLUB	16	17 AFTERNOON BOOK CLUB 1:30 p.m.	18	19
20	21	22	23	24 	25	26
27	28	29	30	1	2	3